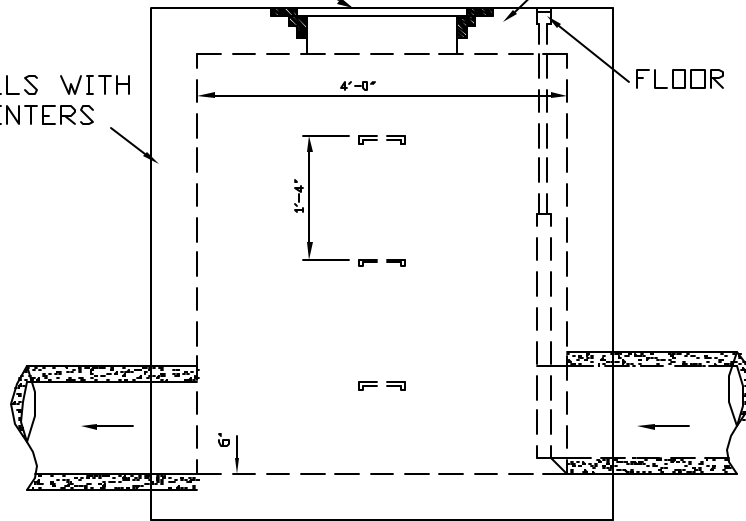


USE DEETER NO. 2010
CATCH BASIN COVER
(OR APPROVED EQUAL)

6" CONC. TOP WITH
4 BARS @ 6" CENTERS
BOTH WAYS

POURED CONC. WALLS WITH
4 BARS @ 6" CENTERS
BOTH WAYS

FLOOR BOX & COVER



36" LONG SLIP-ON
OPERATOR

STANDARD SQUARE
OPERATING NUT

DEETER MS11
MANHOLE STEPS
(OR EQUAL)

ARMCO 20-10C
SLUICE GATE AT
90 TO PIPE

